

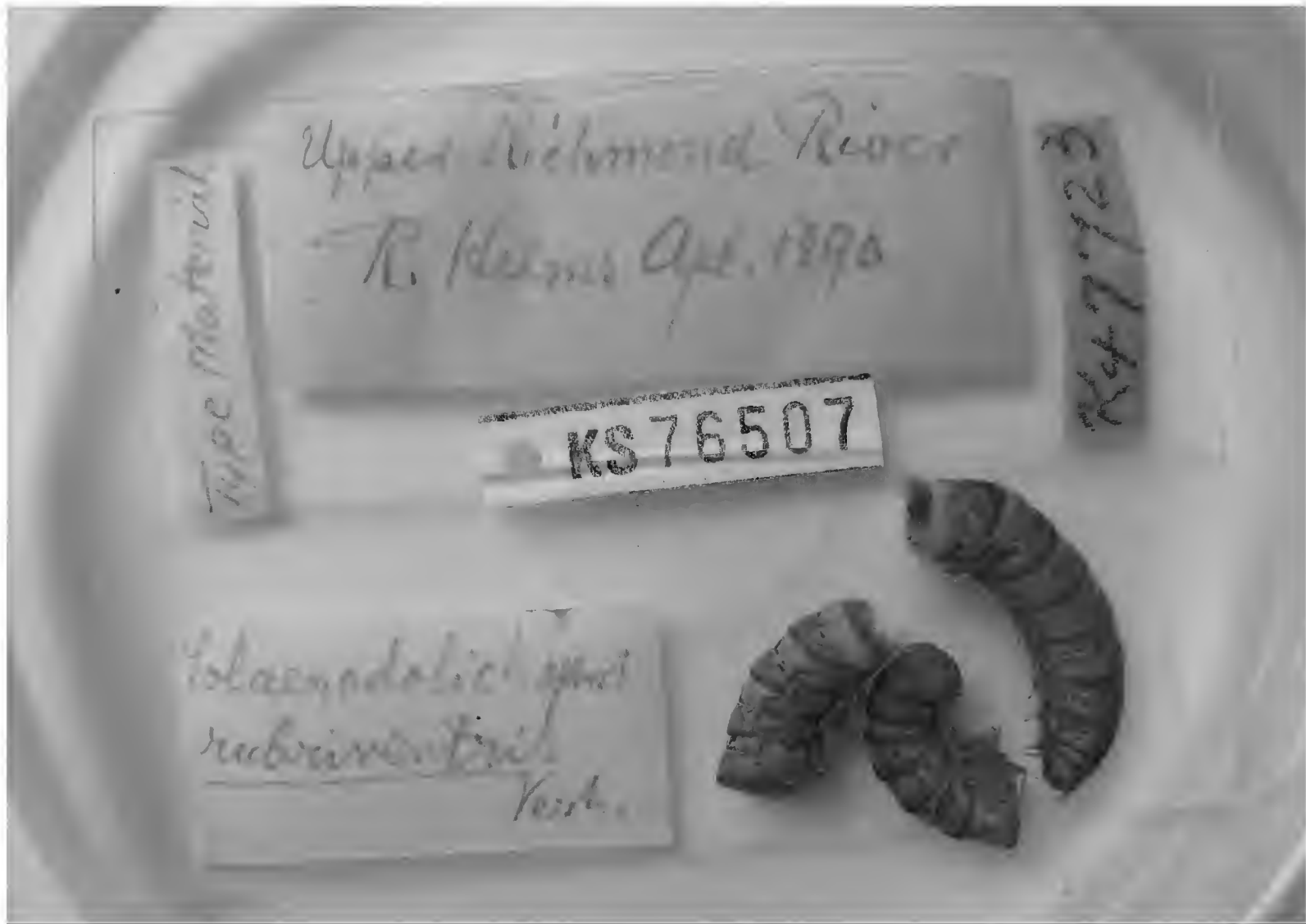
Supplement 2 to 'The millipede genus *Solaenodolichopus* Verhoeff, 1924 (Diplopoda, Polydesmida, Paradoxosomatidae). 1. New genus diagnosis and redescriptions of named species'

Robert Mesibov
26 February 2014

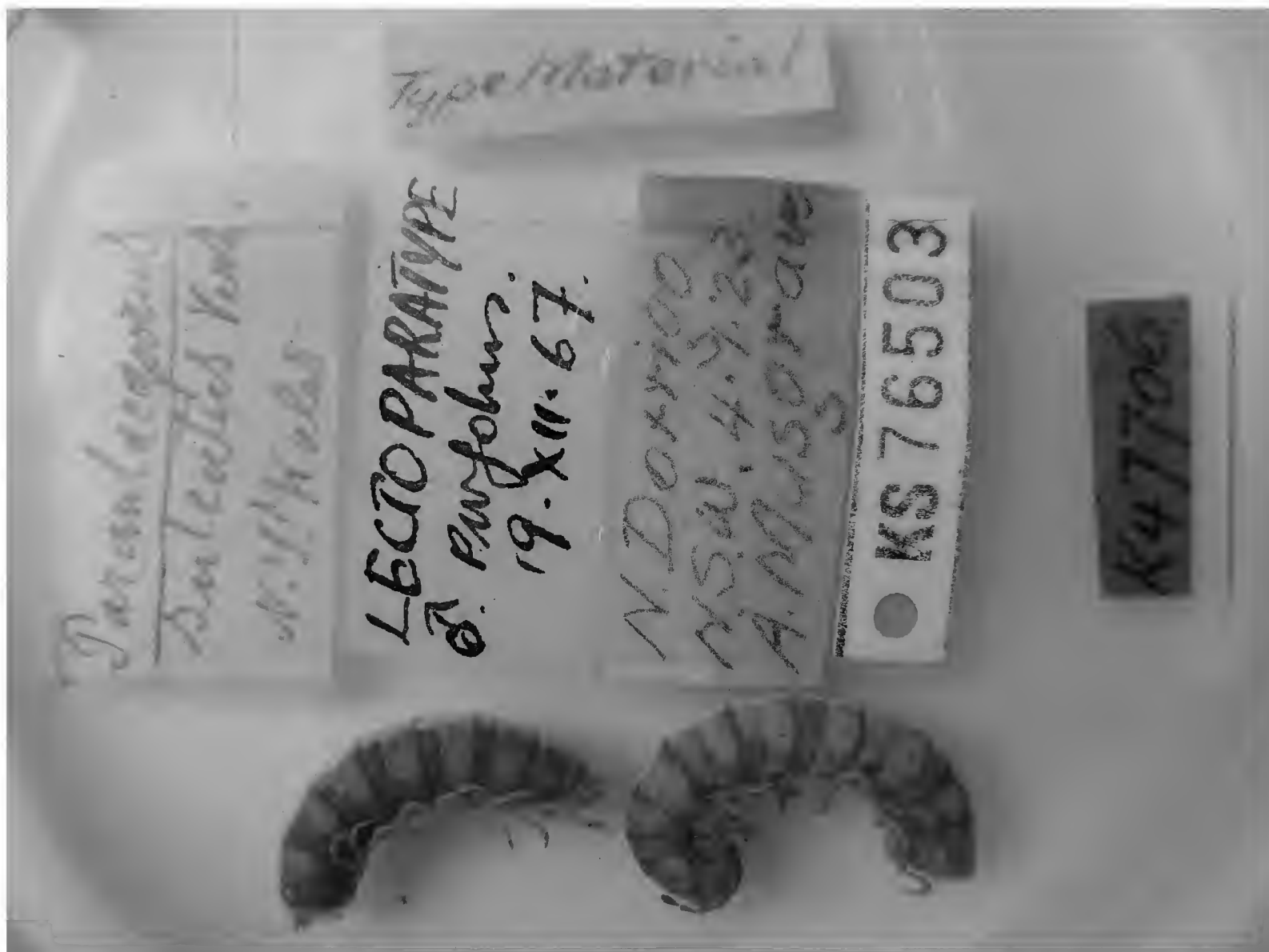
This document contains images of *Solaenodolichopus* types in alcohol and on slides.



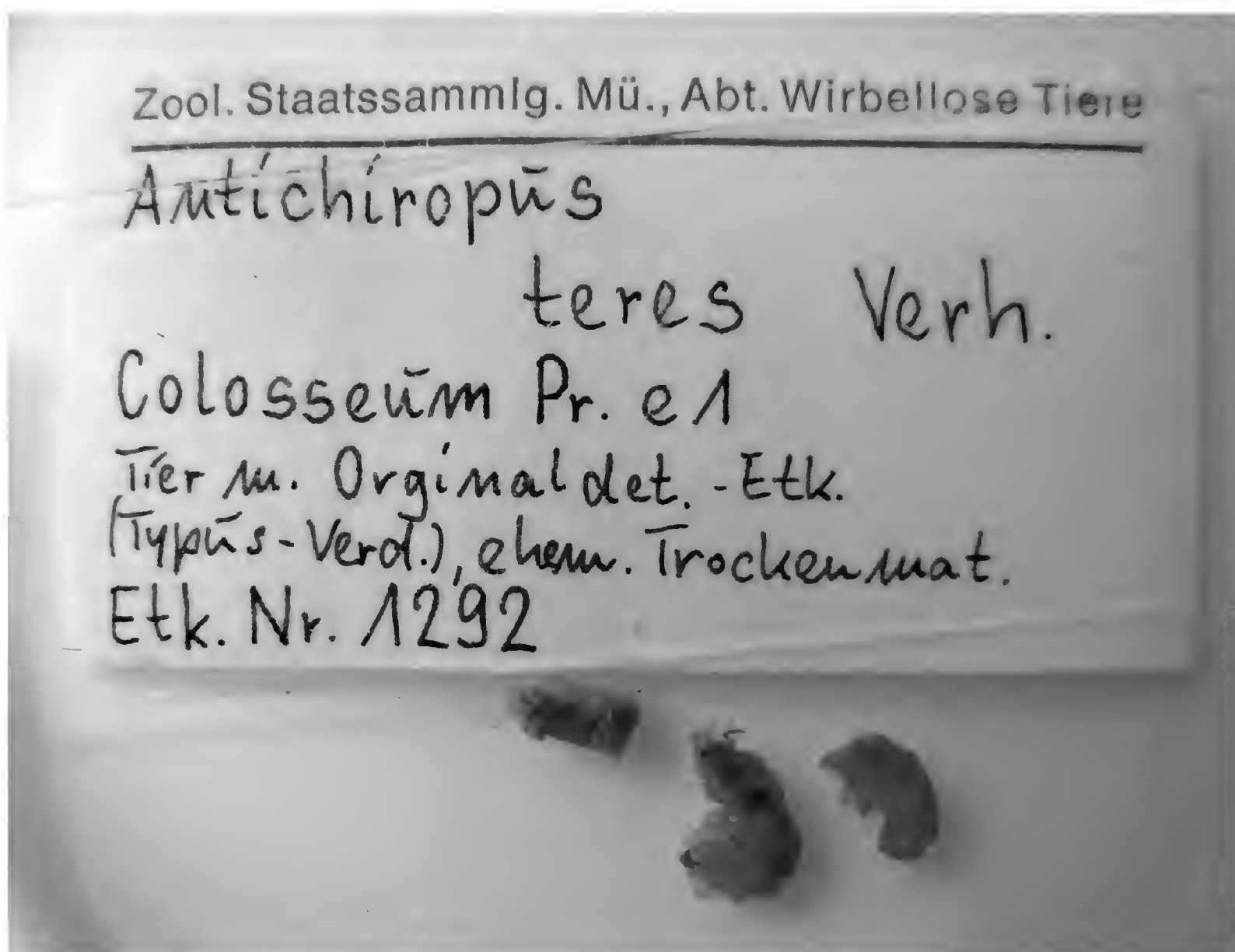
Male syntype, *S. rubriventris*, AM KS.76506



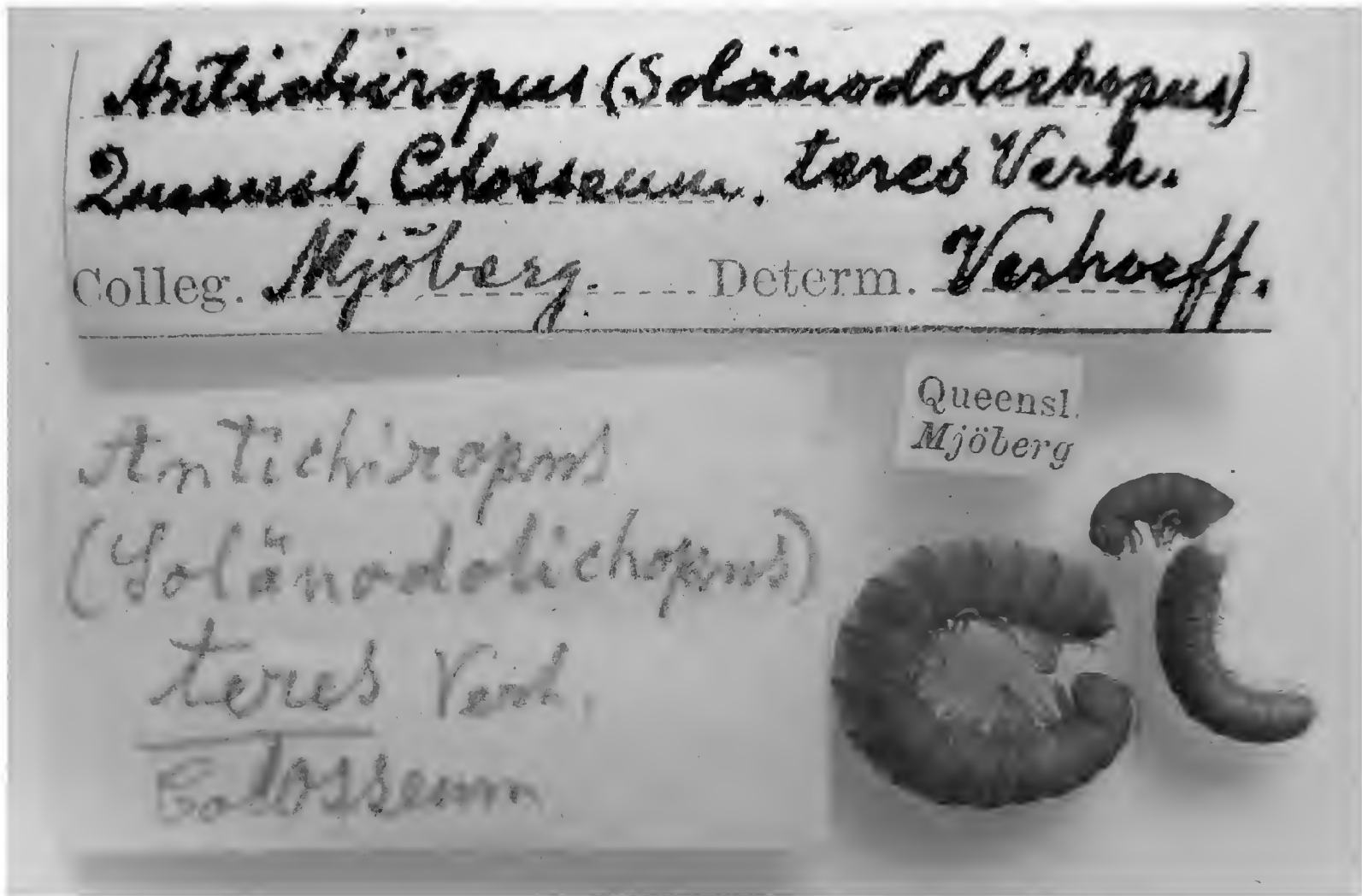
Female syntype, *S. rubriventris*, AM KS.76507



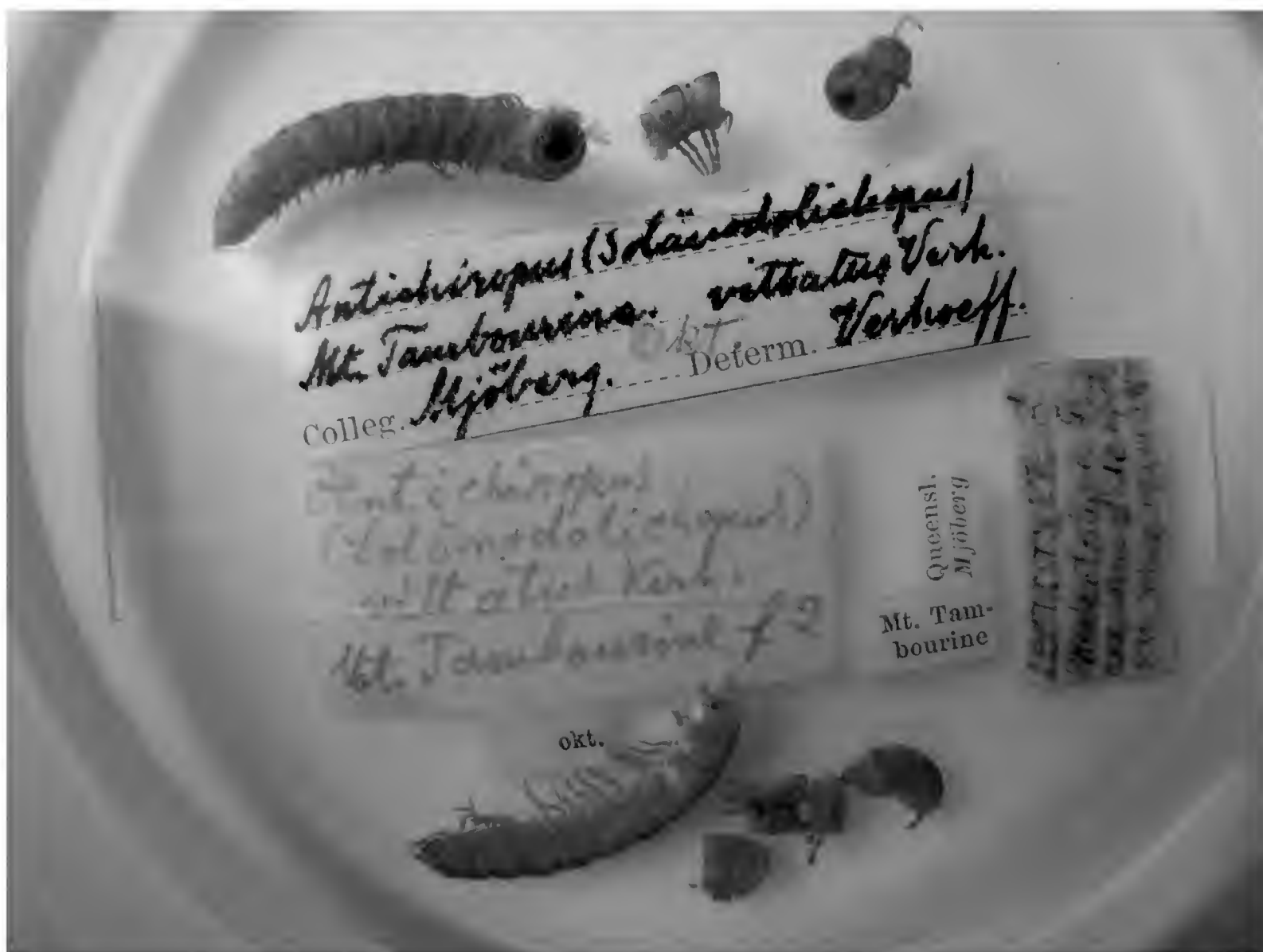
Lectotype, *S. sulcatus*, AM KS.76503



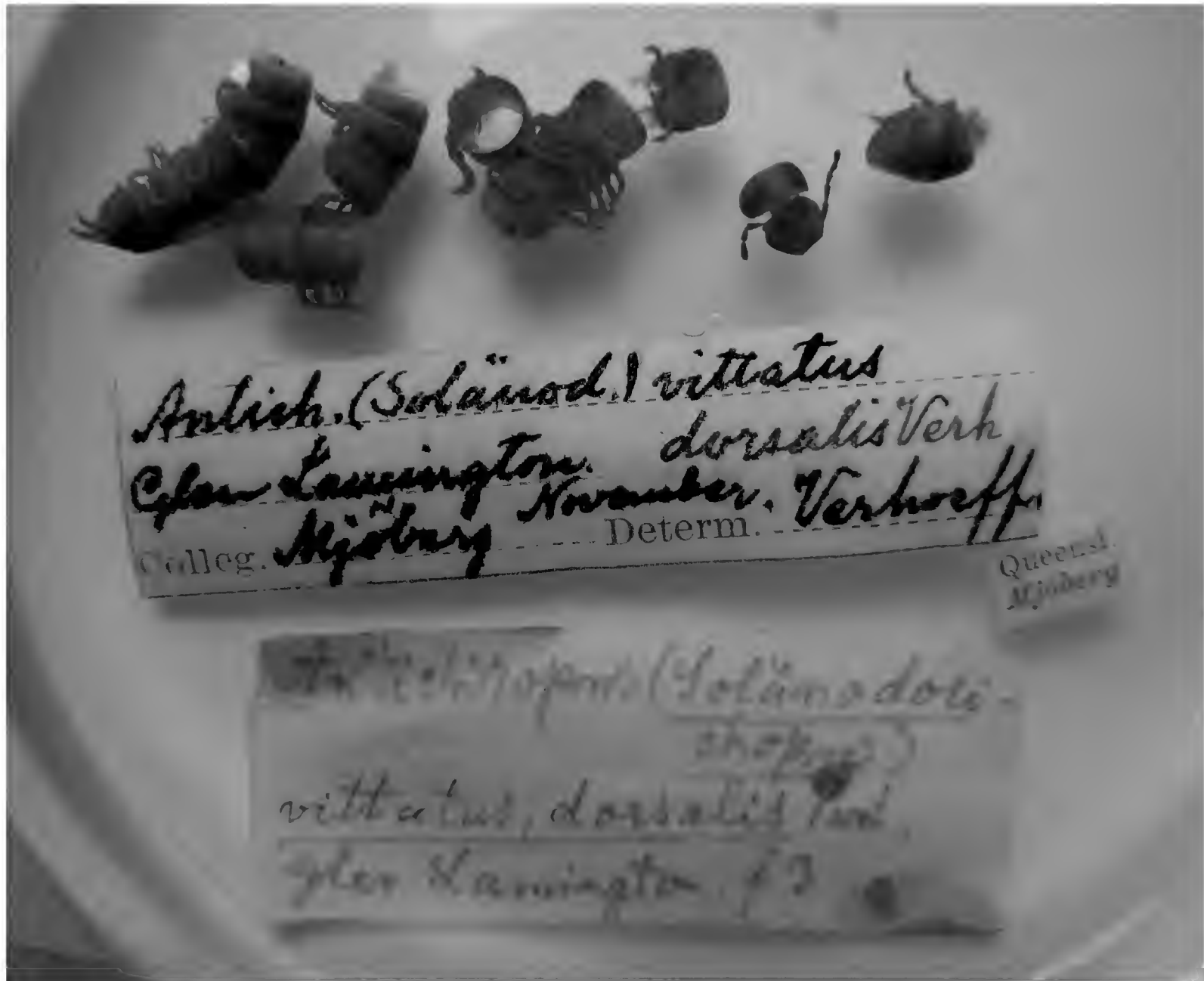
Lectotype, *S. teres*, slide NHRS KAS1000000005, alcohol ZSM A20052188



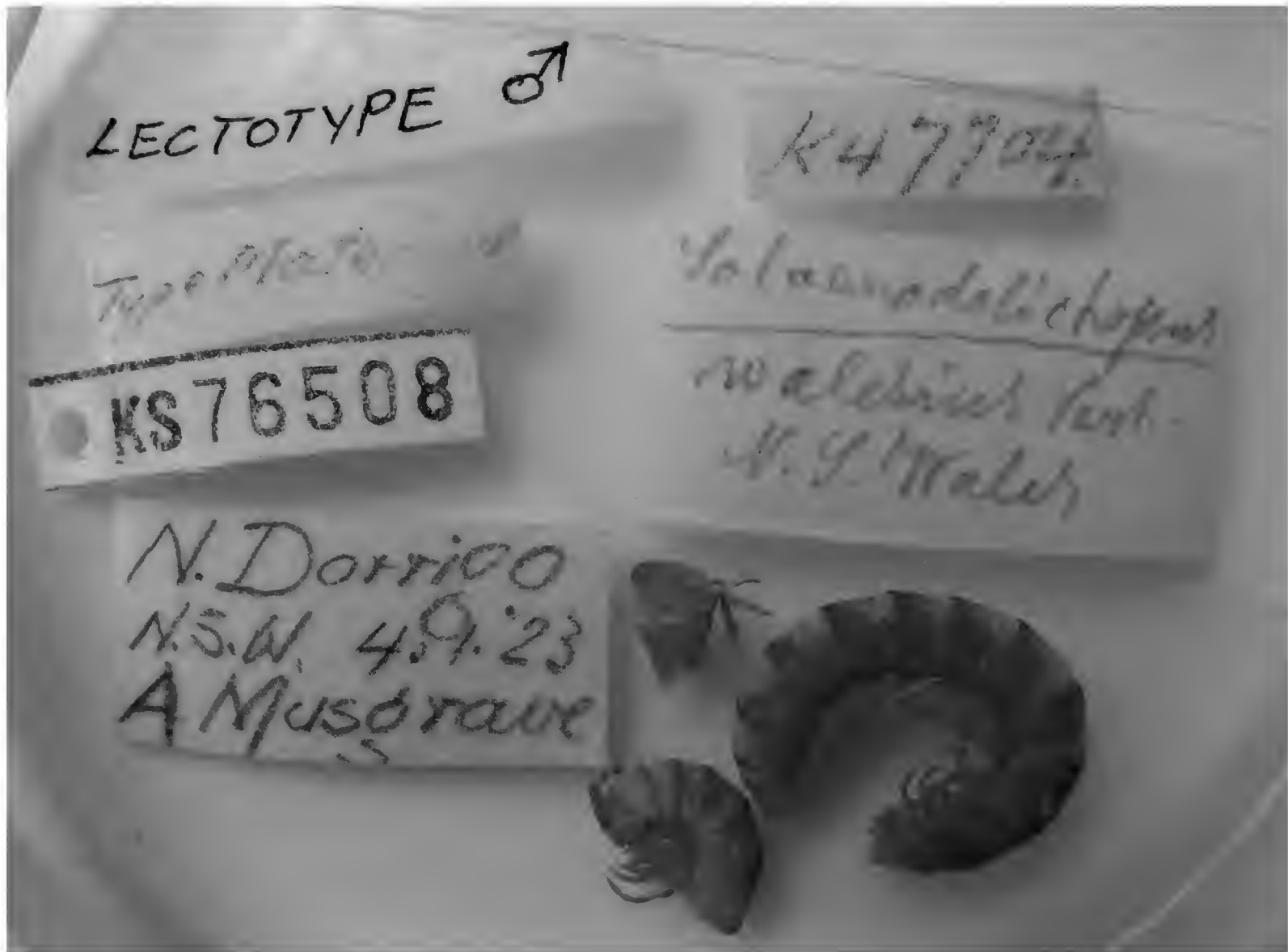
Paralectotype and juvenile, *S. teres*, NHRS KAS1000000007



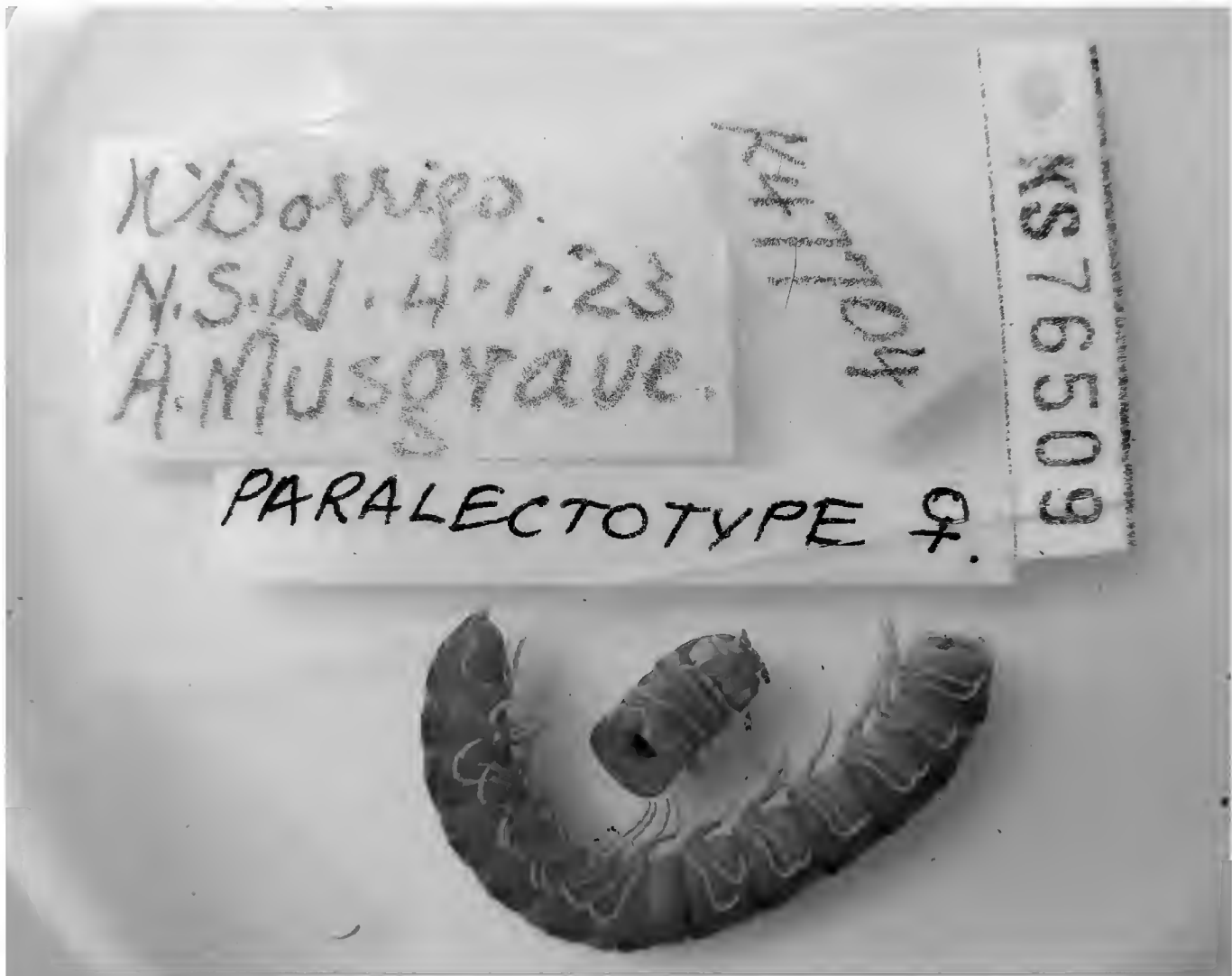
Lectotype, *S. vittatus*, slide NHRS KAS1000000004
 Lectotype (bottom) and paralectotype (top), alcohol NHRS KAS1000000006



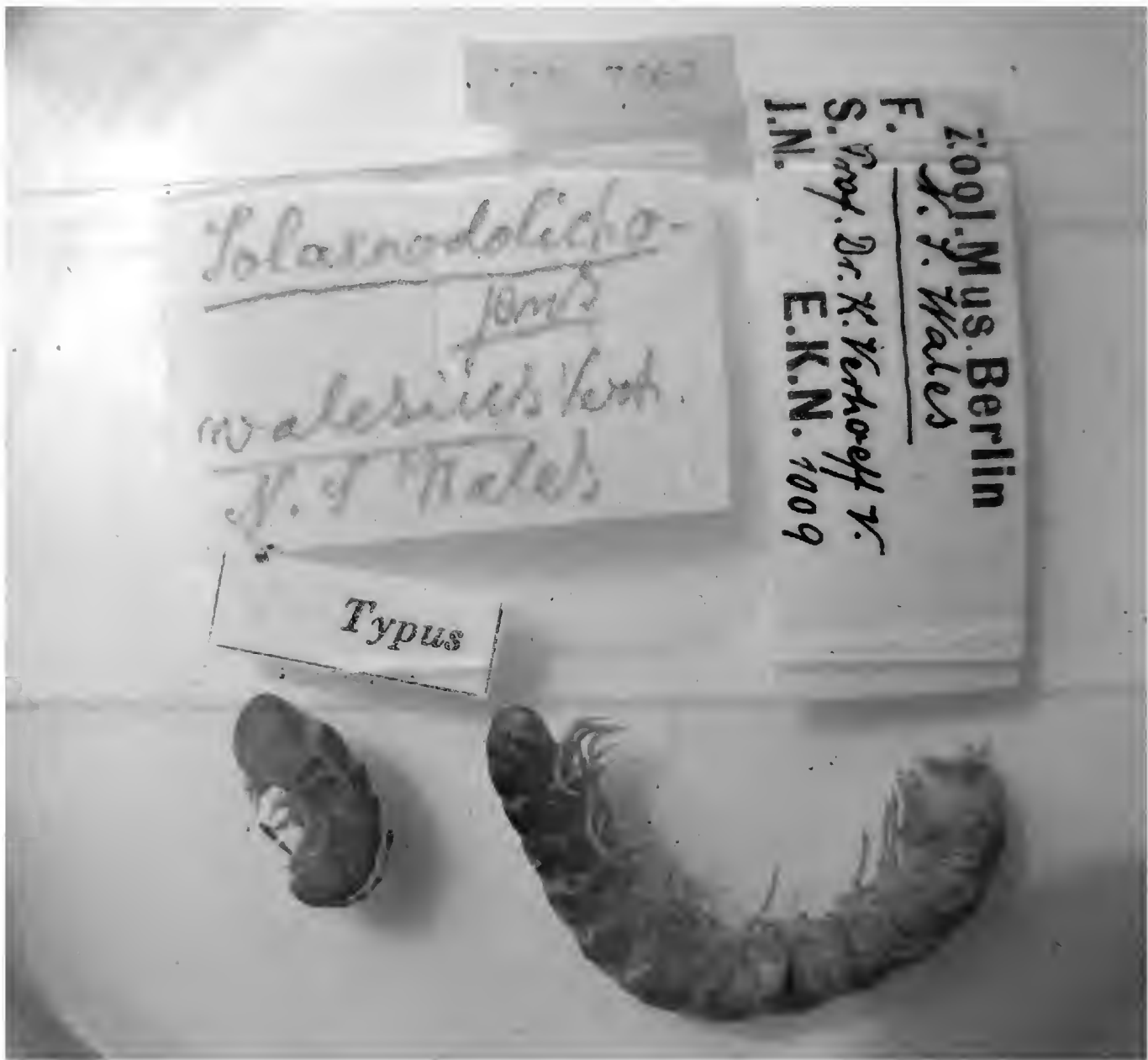
Holotype, *S. vittatus dorsalis*, slide and alcohol both NHRS KAS100000003



Lectotype, *S. walesius*, AM KS.76508



Paralectotype, *S. walesius*, AM KS.76509



Paralectotype, *S. walesius*, ZMB 7962



Lectotype, *Parwalesoma castaneum* (= *S. walesius*), ZMB 12652



Paralectotype, *Parwalesoma castaneum* (= *S. walesius*), AM KS.76700

Paralectotype,
Parwalesoma
castaneum (= *S.*
walesius),
slide ZSM
A20033565, alcohol
ZSM 20052246
(male top, female
bottom)

